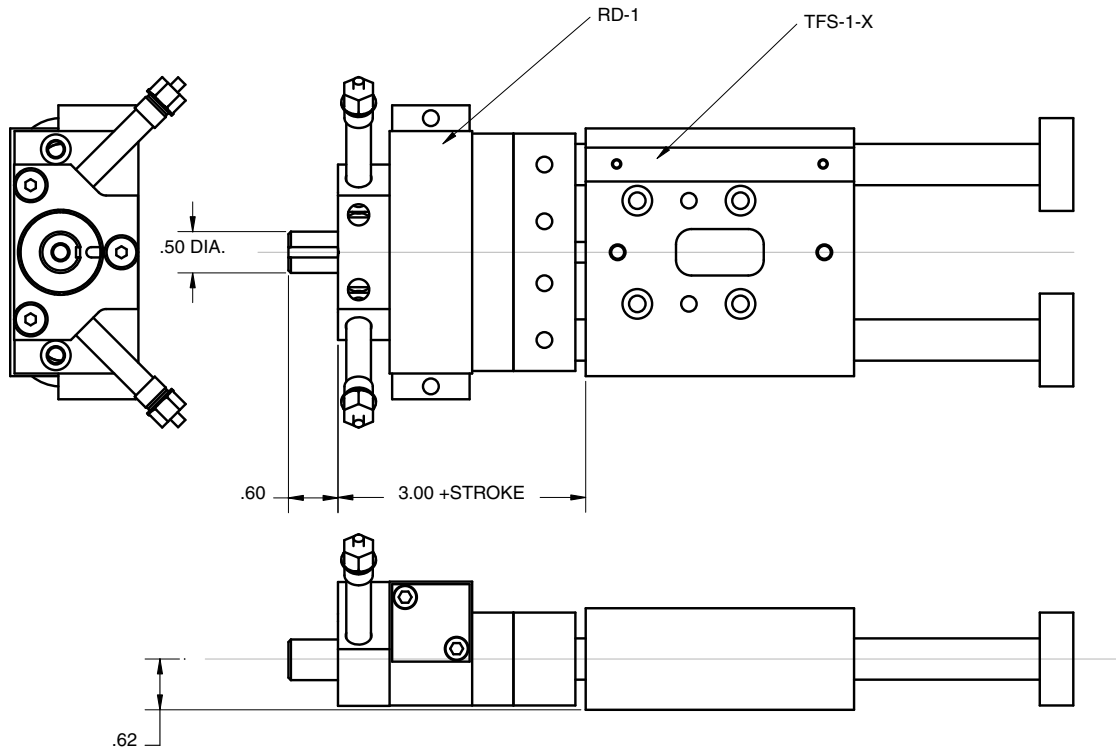
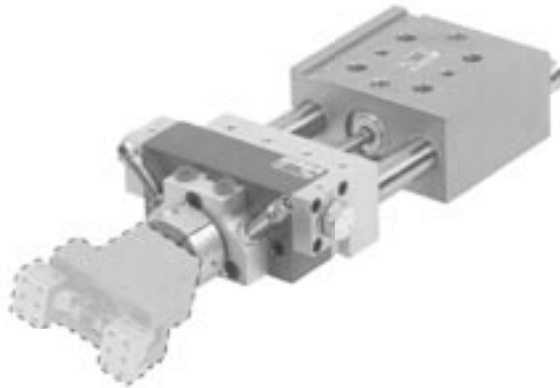


Features

- Fully assembled Pick & Place unit with all mounting components—ready to install, plumb and run.
- Rotary comes with our stopscrew system for accurate stroke adjustment and optional sensing capabilities. (see page 143)
- Made from our standard proven precision components, featuring our Tuff-Series linear actuators.
- We will supply a gripper mounting plate or make a custom one for any end-effector.
- The unit can be converted to a lifting table and rotary combination by adding a Tuff Lifting Table (TLT) bracket.



P

Ordering

The TFR11 comes in several standard combinations. Unit includes TFS-1-X, RD-1, adapter plate and optional gripper mounting hub. Grippers and sensors ordered separately.

Technical Data

TFS -1	= 3/4" BORE
RD-1	= 1/2" BORE
AIR CONNECTION	= 10-32
AIR PRESSURE	= 60 – 110 PSI
MAX REC. LOAD	= 4 lbs.

CMU-TFR11 - [] - [] - []

TFS-1 SIZE 05 (0.5" STROKE) 10 (1.0" STROKE) 15 (1.5" STROKE) 20 (2.0" STROKE)

GRIPPER HUB N - (No hub) 0 - (Hub adapter to BT-0 series gripper) 1 - (Hub adapter to BT-1 series gripper)
--

Lifting Table Option 0 - (No Tuff Lifting Table Bracket) 1 - (Include TLT Bracket)
