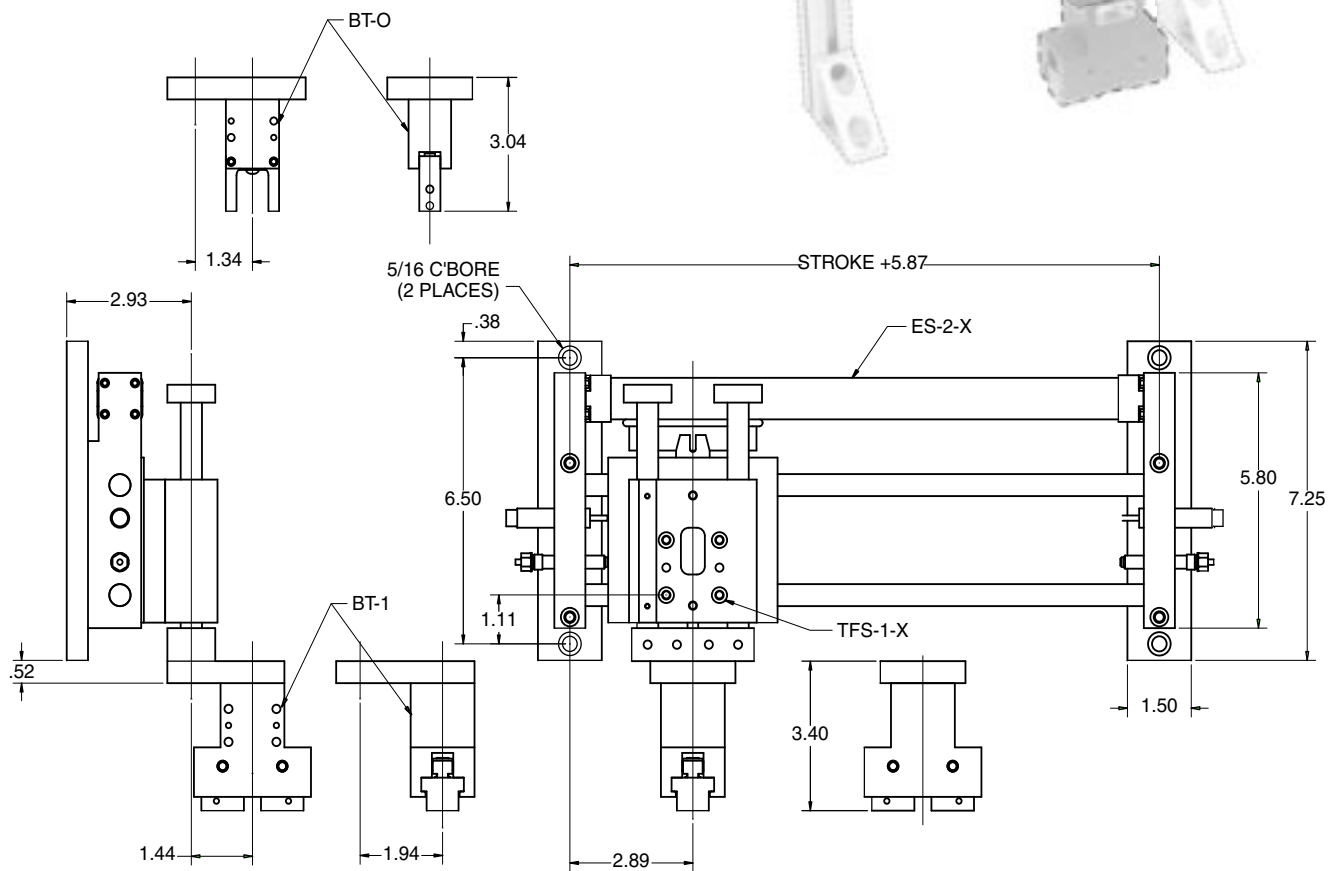
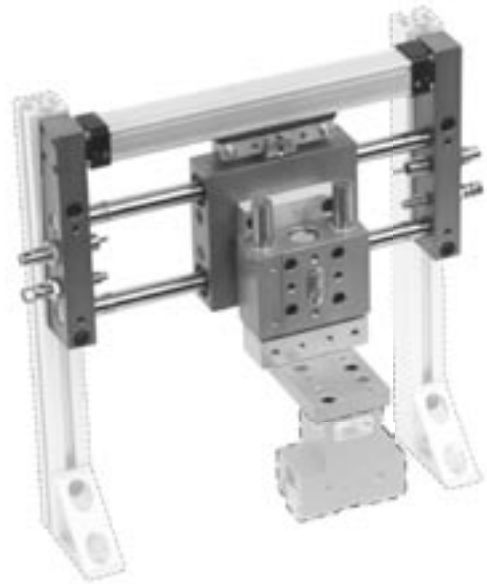


## Features

- Fully assembled Pick & Place unit with all mounting components — ready to install, plumb and run.
- Components come with our stopscrew system for accurate stroke adjustment and optional sensing capabilities. (see page 143)
- Made from our standard proven precision components including our Tuff-Series line of linear actuators.
- We can supply a gripper mounting plate or make a custom one for any end-effector.



## Ordering

The CMU-ESTF21 includes a ES-2, TFS-1, adapter plate, and optional gripper mounting plate and can be ordered with the following number:

**CMU-ESTF21** -  -  -

ES-2 SIZE  
STROKE IN INCHES

TFS-1 SIZE  
05 (0.5" STROKE)  
10 (1.0" STROKE)  
15 (1.5" STROKE)  
20 (2.0" STROKE)

GRIPPER ADAPTER  
N – No adapter  
0 – Adapter for BT-0 series gripper  
1 – Adapter for BT-1 series gripper

## Technical Data

ES -2 = 5/8" BORE  
TFS -1 = 3/4" BORE  
AIR CONNECTION = 10-32  
AIR PRESSURE = 60 – 110 PSI  
RECOMMENDED LOAD = 14 lbs.

