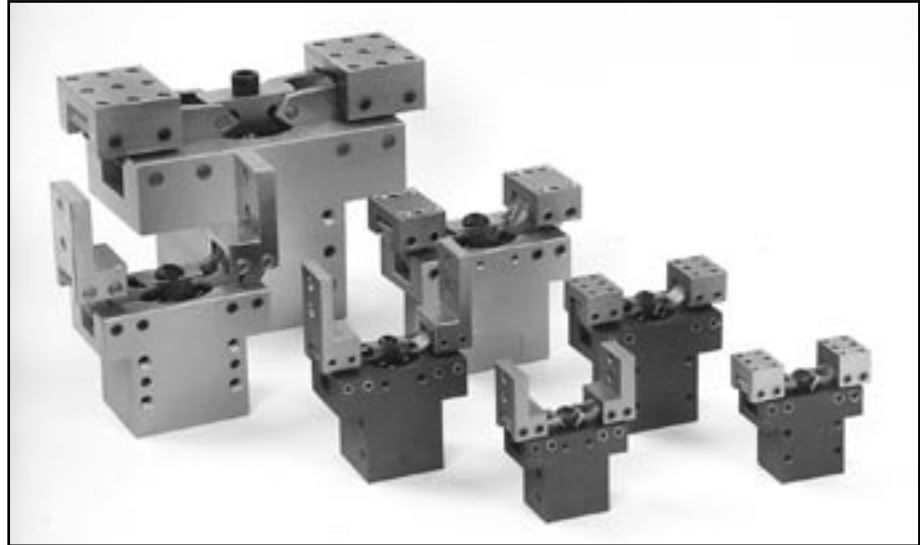


BT-P Tuff Parallel Motion Gripper

Features

A

- Square body design with built in cylinder
- Roller burnished I.D. and hard-coat anodized for wear resistance
- Hardened steel clevis link
- Ground steel linkages
- Self-lubrication pivot bushings
- Four bar linkage design- no sliding parts
- Hardened pins for increased cycle life
- Dowel pin & tapped holes for tooling
- Optional sensing (see page 25)
- Optional tooling jaws
- Side and bottom mounting with dowel pin & tapped holes



Technical Data

Operation Pressure = 60-110 psi
 Repeat accuracy = +/-0.002"
 Life expectancy = >5 million cycles

Grip Force = Operating pressure * Grip Factor * Derating Factor	
Spread Force = Grip Force	
Type	Grip Factor
BT-0P	0.16
BT-1P	0.53
BT-2P	0.82
BT-3P	1.79

Force diagrams below depict the grip force, which is the sum of the forces of the jaws at the top edge of the jaw. For added on tooling a graph is given for derating the grip force.

